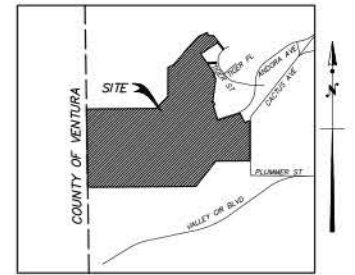
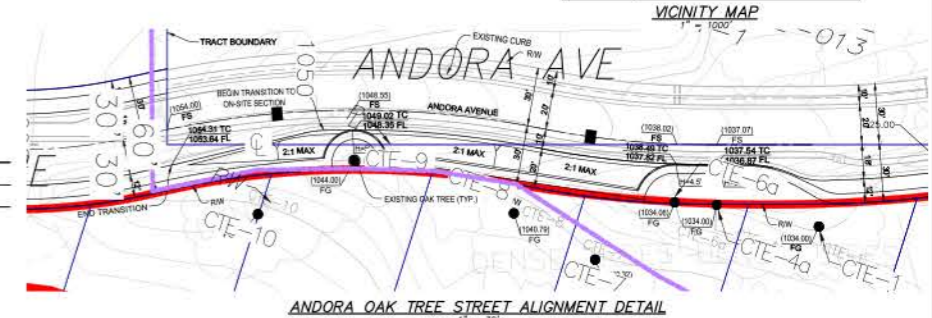
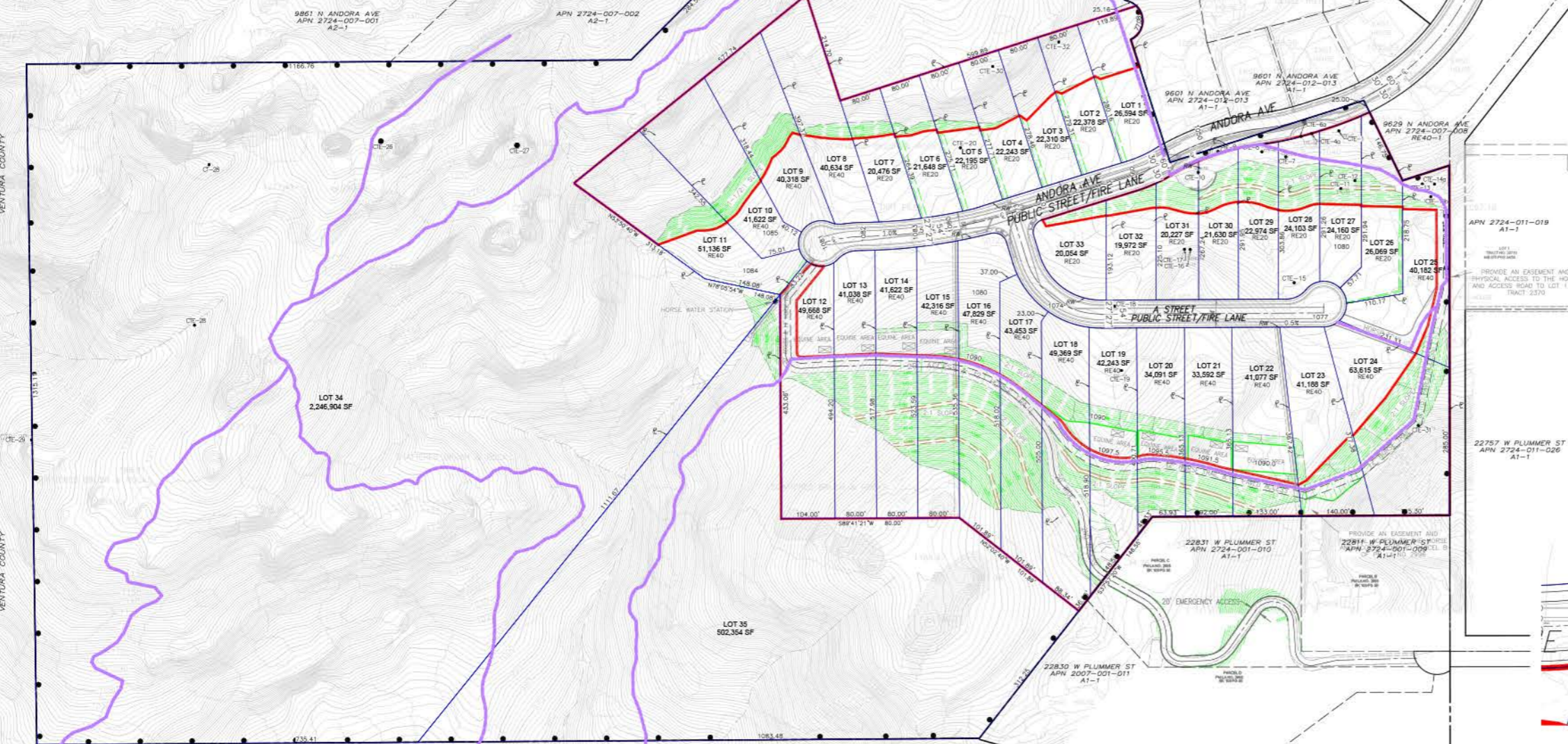
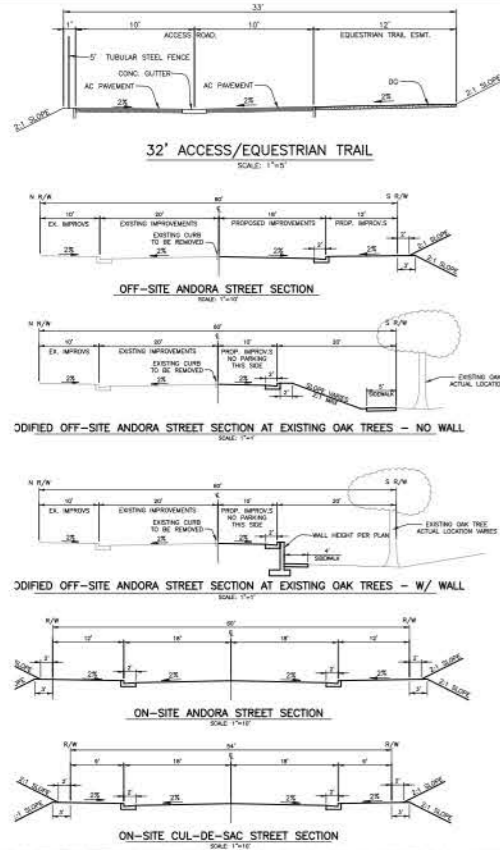


ANDORA – 33 RESIDENTIAL LOTS 2 OPEN SPACE LOTS  
IN THE CITY OF LOS ANGELES

TOTAL PROJECT AREA = 3,965,230 SQ.FT., 91.03 ACRES  
2 OPEN SPACE LOTS = 2,749,258 SQ.FT., 63.11 ACRES  
GRADED AREA = 898,227 SQ.FT., 20.62 ACRES  
DEED RESTRICTED AREA = 566,309 SQ.FT., 13.00 ACRES

Agenda Item 9(b)  
SMMC  
8/17/15



9201 N VALLEY CIRCLE BLVD  
APN 2007-002-900  
14032-141

PREPARED FOR:  
**ANDORA PROPERTIES I, LLC.**  
9748 TOPANGA CANYON BLVD  
CONTACT: DANIEL BERNSTEIN

9503 ANDORA PLACE  
LOS ANGELES, CA 91311

DEVELOPER'S ENGINEER:  
**FORMA ENGINEERING INC.**  
10814 Reseda Boulevard, Northridge, CA 91325  
Phone: (818) 832-1710 • Fax: (818) 832-1740

No.	DATE	REVISION	DESIGNER:
			W.M.W.
			CHECKED BY:
			W.M.W.
			DATE:
			2/08/2015
			SHEET
			OF
			1
			1